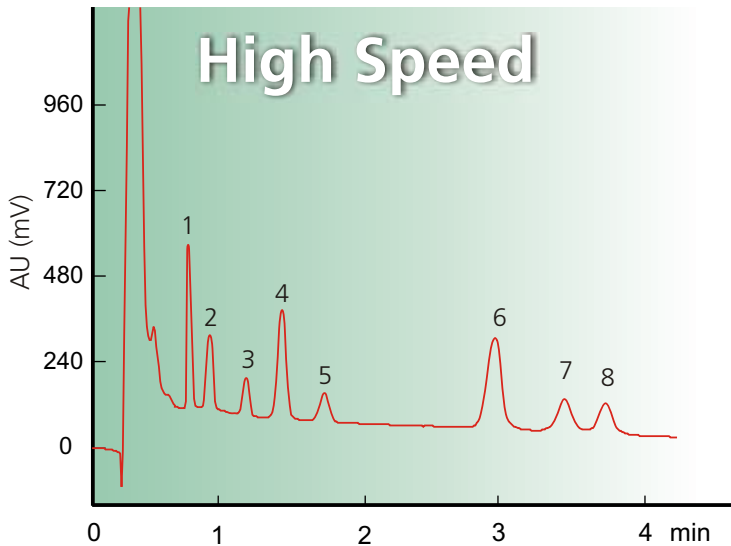


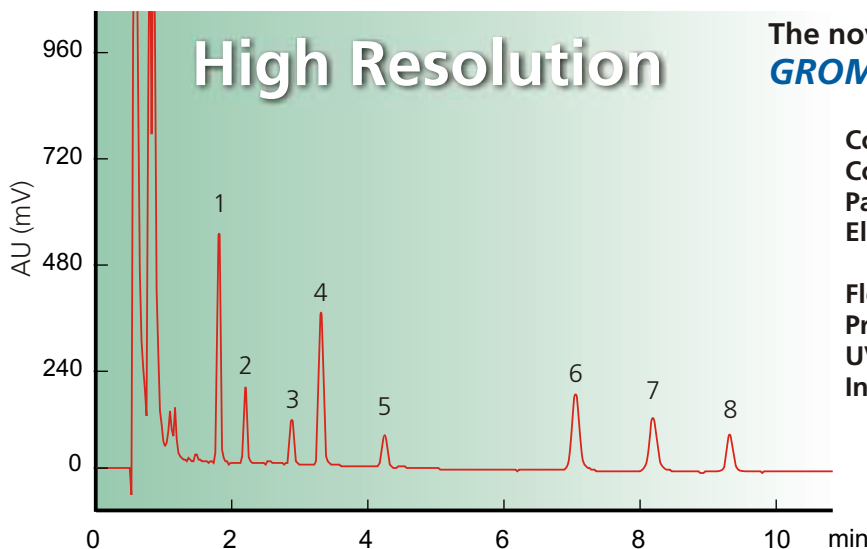
Separation of ANTIPILEPTICS



- 1 Ethosuximide
- 2 Primidone
- 3 Lamotrigine
- 4 Phenobarbital
- 5 Carbamazepine-10,11-epoxide
- 6 IS, Hexobarbital
- 7 Phenytoin
- 8 Carbamazepine

The most often used, outstanding
GROM Sapphire particles packed in short columns

Column phase: GROM Sapphire 110 C18, 5 μ m
Column size: 53 x 4.0 mm
Part No: GSODS0511S0604
Eluent: 50 mM Na-phosphate, pH 6.5
 MeOH / ACN= 62 / 23 / 15
Flow: 1.5 ml/min
Pressure: 6.0 MPa
UV-Detection: 204 nm
Injection: 3 μ l serum calibration
 standard (CHROMSYSTEMS)
 + IS Hexobarbital



The novel unique "high loaded"
GROM Sapphire phases for high resolution

Column phase: GROM Sapphire HL C18, 3 μ m
Column size: 125 x 4.0 mm
Part No: GSODH0311S1204
Eluent: 50 mM Na-phosphate, pH 6.5
 MeOH / ACN= 62 / 23 / 15
Flow: 1.2 ml/min
Pressure: 17 MPa
UV-Detection: 204 nm
Injection: 3 μ l serum calibration
 standard (CHROMSYSTEMS)
 + IS Hexobarbital